



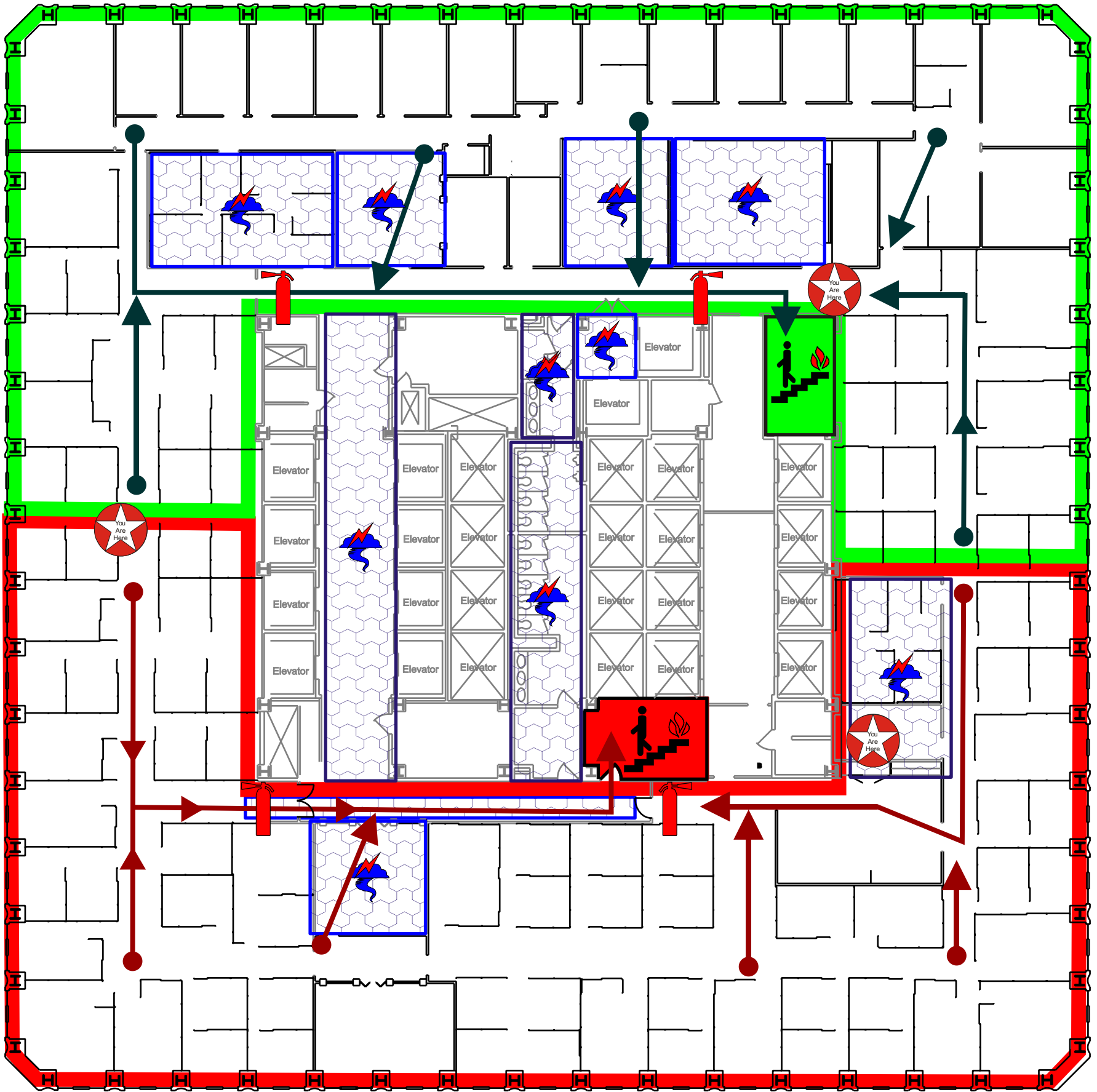


LEGEND

 You Are Here	 Fire Exting.	 Stairwell Exit	 Safe Haven
--	--	--	--

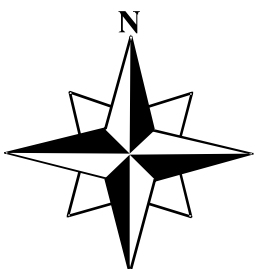
Safe Havens	Assembly Points	Emergency Exits
<ul style="list-style-type: none"> ▶ Stairwells ▶ Inner Rooms Without Windows ▶ Bathrooms ▶ Elevator Lobbies 	<ul style="list-style-type: none"> ▶ Inside: 13th Floor ▶ Outside: Northeast Corner of Archer and Elgin 	<ul style="list-style-type: none"> ▶ Green Zone - North Stairwell ▶ Red Zone - South Stairwell



EMERGENCY NUMBERS

 Non-Emergency Phone:

 Emergency Phone:

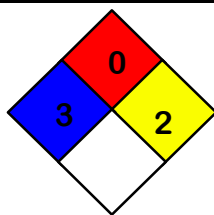


EMERGENCY EVACUATION MAP

EMERGENCY RESPONSE PLAN

SULFURIC ACID

◆ RECOGNITION ◆



FOR EMERGENCY SOURCE INFORMATION CONTACT:

- Emergency Number: (918)
- CHEMTREC: (800) 424-9300
- 3E: (800) 451-8346
- Manufacturer's Phone Number (856) 423-6300

INGREDIENT	CAS NUMBER	PERCENTAGE (%)
SULFURIC ACID	7664-93-9	100%
EXPOSURE LIMIT		2000 EMERGENCY RESPONSE GUIDEBOOK
TWA	STEL	ID# 1830
1 mg/M³	3 mg/M³	Not Highlighted
		ERG# 137
		Page 238 and 239
FLASH POINT: Not Flammable		VAPOR PRESSURE: Not Volatile
BOILING POINT: Very High		STABILITY: Material is Stable
SPECIFIC GRAVITY: Heavier Than Water (will mix)		VAPOR DENSITY: May Create a Mist
REACTIVITY/INCOMPATIBILITIES: Extremely Reactive With Combustible Materials, Organic Materials, Metals, Caustics, And Water		SOLUBILITY IN WATER: Mixes With Water, However Very Reactive
APPEARANCE AND ODOR: Odorless And Colorless		

▼ EVALUATION ▼

HEALTH HAZARDS - ACUTE

<p>BREATHING IT...</p> <ul style="list-style-type: none"> • May be fatal, extremely hazardous to lungs and respiratory system • May cause respiratory burns 	<p>GETTING IT ON YOUR SKIN...</p> <ul style="list-style-type: none"> • Skin contact produces severe burning
<p>GETTING IT IN YOUR EYE...</p> <p>May cause severe burns to eyes</p>	<p>INGESTING IT...</p> <p>May be fatal, extremely hazardous</p>

EVALUATION MONITORING

Air Monitoring	Corrosivity Testing
Draeger Tubes: Sulfuric acid 1/a, Range = 1 - 5 mg/M³	pH Paper – Less than 4 considered hazardous

+ CONTROL +

FIRST AID

<p>INHALATION: If inhaled, remove to fresh air. If not breathing, give artificial respiration. If breathing is difficult, give oxygen. Get Medical Aid!</p>
<p>SKIN: In case of contact, immediately flush skin with plenty of water for at least 15 minutes while removing contaminated clothing and shoes. Get Medical Aid!</p>
<p>EYES: Check for and remove any contact lenses. Immediately flush eyes with plenty of water for at least 15 minutes, occasionally lifting the upper and lower lids, Get Medical Aid!</p>
<p>INGESTION: If swallowed, do not induce vomiting unless directed to do so by medical personnel. Get Medical Aid!</p>

EMERGENCY RESPONSE

<p>FIRE: If incipient fire, use Dry chemical or CO₂, do not use water on material itself. If not incipient, evacuate and wait for Okmulgee Fire Department.</p>
<p>SPILL OR LEAK:</p> <ul style="list-style-type: none"> • Do not touch damaged containers or spilled material unless wearing appropriate protective clothing (See Reverse Side). • Stop leak if you can do it without risk. • Use water spray to reduce vapors; do not put water directly on leak, spill area or inside container. • Keep combustibles (wood, paper, oil, etc.) away from spilled material. • Prevent entry into waterways, sewers, basements or confined areas.

PUBLIC SAFETY

<ul style="list-style-type: none"> • Isolate spill or leak area immediately for at least 160 to 330 feet in all directions. • If on fire, evacuate one-half (1/2) mile in all directions
--

PERSONAL PROTECTIVE EQUIPMENT

See Reverse Side

EMERGENCY RESPONSE PLAN

SULFURIC ACID

AIR MONITORING



Sulfuric acid 1/a
1 to 5 mg/M³ --- 100 Stroke

PERSONAL PROTECTIVE EQUIPMENT LEVEL B FOR MITIGATION AND CONTAINMENT

SARANEX LEVEL B SUIT-GLOVES TAPED



SCOTT AIR PAK



Butyl Rubber Gloves

Use compatible spill control materials.

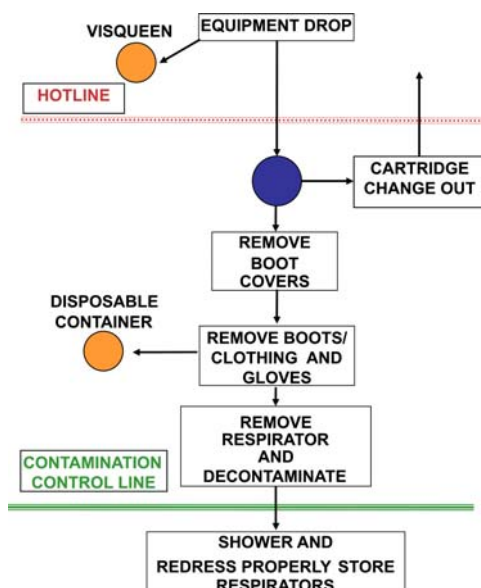
PERSONAL PROTECTIVE EQUIPMENT LEVEL C FOR ABATEMENT AND DISPOSAL

◆ Substitute **AO ½ Face Air Purifying Respirator with N100 (purple) filters** for **SCBA** and Add **Face Shield**

CONTAINMENT, ABATEMENT AND DISPOSAL

NEUTRALIZATION OF SULFURIC ACID

Number of Gallons Spilled	X	Weight of 1 gallon of Sulfuric Acid	X	Conversion Factor for Soda Ash (Sodium Carbonate)	=	Number Of Pounds Of Soda Ash Needed
1		15.34 pound per gallon		1.082		16.6 pounds
10		15.34 pound per gallon		1.082		166.6 pounds
100		15.34 pound per gallon		1.082		1666.6 pounds



DECONTAMINATION

LEVEL C

- Wash down PPE with water and dispose of rinsate.
- Collect rinsate in disposable pools or other device.
- All PPE except Respirator and Faceshield is to be disposed of.